

AN INTEGRATED TRAIL SYSTEM AND CONNECTIONS TO PROPERTIES ON DANIELS ROAD

We noted previously that railroad tracks separate the Jonsson Campus from all of the college's property to the west. Currently, access between the Jonsson Campus and college activities on these properties is by vehicles. We believe that in the long run, it would be in Skidmore's best interests to create connections for pedestrians and bicyclists.

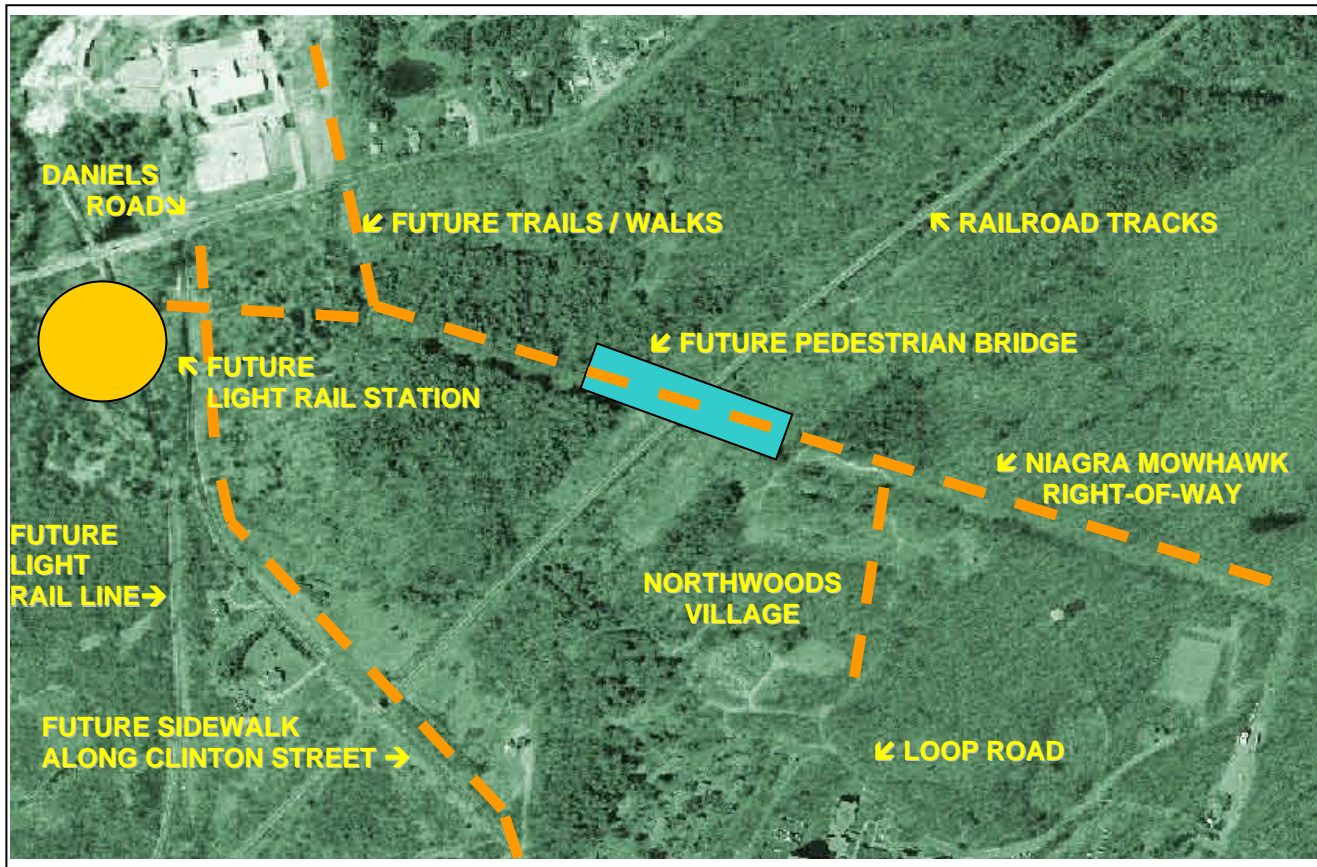
The college has an extensive trail system throughout the North Woods, most of which was created in the days of the Woodlawn Estate and its carriages. The Campus Environmental Committee has worked with the administration to develop zones within the North Woods to allow for the coexistence of academics, meditation, and recreation for members of the college and the general Saratoga community.

The City of Saratoga Springs has its own trail system planned from Loughberry Lake to SPA State Park. The County has a more extensive plan for a trail system spanning from Moreau Lake all the way to Clifton Park. Both systems propose to pass through some portion of Skidmore's properties. The college should make a coordinated effort to connect these trails with those on campus.

We see a number of synergistic and mutually beneficial opportunities. For instance, one such route could be along the Niagara Mohawk power line right-of-way shown on the map below. In the long term a pedestrian bridge could span the railroad tracks in the North Woods, connecting hikers on the city's trail to cross-over to the county trail and vice versa. For Skidmore, this bridge would create easy pedestrian access from Northwoods Village to the Van Lennep Stables and the college's properties on Daniels Road.

Further into the future, there are community plans for possibly resurrecting an abandoned rail line to create a scenic light rail system. One section would pass adjacent to college property. This could be an opportunity for the State to create a stop and rail station near the intersection of Clinton Street and Daniels Road. Such a station could serve visitors to the college as well as students and staff.

In the short term, Skidmore should press for a sidewalk/bike path along Clinton Street to Daniels Road, to enable pedestrians and bicyclists to reach the Van Lennep Riding Center.



Potential trail connections and rail station