





SKIDMORE
COLLEGE

Campus Master Plan


CAMPUS COMMUNITY
SEPTEMBER 16, 2022

A photograph of a modern campus building with a large glass atrium, surrounded by green lawns and trees. A semi-transparent teal banner is overlaid on the left side of the image, containing the title text. A green L-shaped graphic element is positioned at the top left of the banner.

Campus Master Planning Process in Review



The Skidmore College 2022
Campus Master Plan is meant to be
a **living and flexible document** that
guides decision-making for the
future of the physical campus.



History of Campus Planning at Skidmore

- **1961:** Skidmore Trustees vote to build a new campus
- **1962:** Current campus plan designed
- **1968:** New campus functional. Residence halls, Starbuck, Filene and Library completed, among other buildings
- **1972:** Introduction of coeducation
- **1989:** Second campus plan created to identify building sites, improve traffic patterns, open space, landscape, lighting & signage
- **2000:** Tang Teaching Museum opens
- **2006:** Northwoods Village opens, Dining Hall renovation completed and soccer, lacrosse, field hockey and softball fields finished
- **2007:** Most recent campus master planning process



Key Projects and Priorities from Previous Planning



Zankel Music Center



Billie Tisch Center For Integrated Sciences



Valentine Boathouse



Sussman Village

Project Kick-off

SCOPE

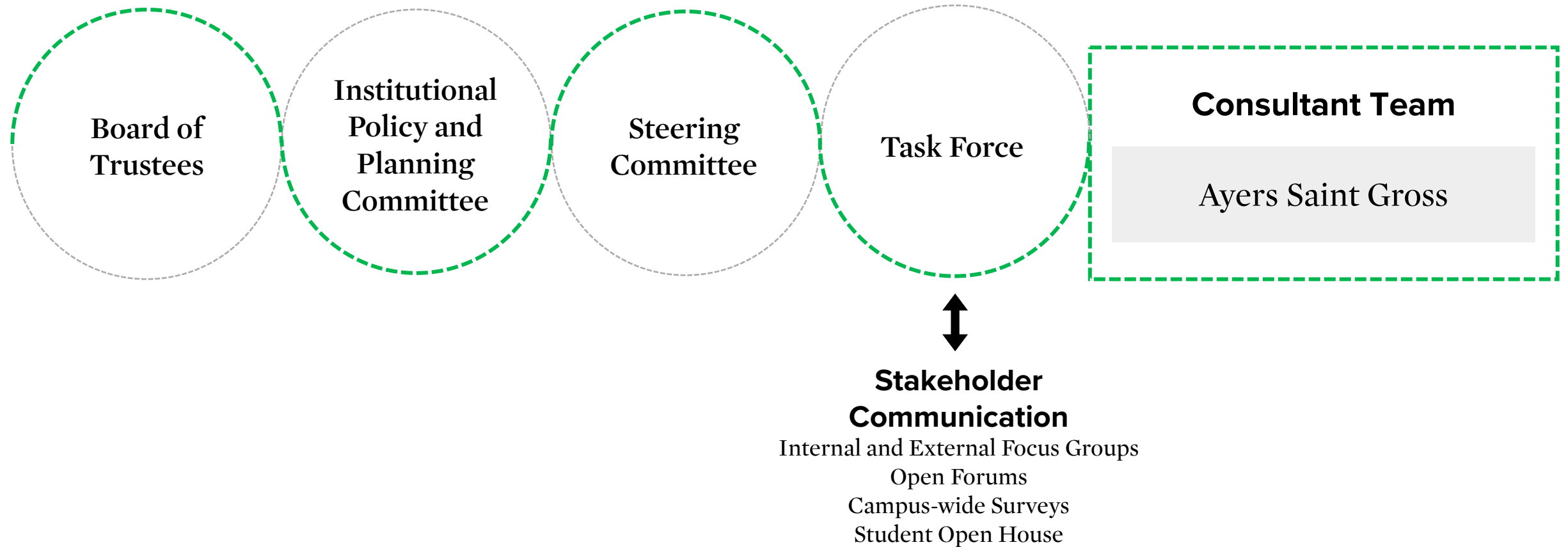
- Critically assess **PRESENT** state of our campus
- Help up plan for the **FUTURE** of our campus
- Think through lens of our **PAST**, the history of the campus' s development
- Freshly evaluate projects and their fit with our current and emerging **STRATEGIC PRIORITIES**
- Examine potential future projects in academic affairs, student and residential life, and other College needs

GUIDING PRINCIPLES

- Flowing from and supporting Skidmore' s strategic priorities, needs, and aspirations (institution-wide)
- Process will involve our entire community
- Sustainability, diversity and inclusion, and access will inform every discussion

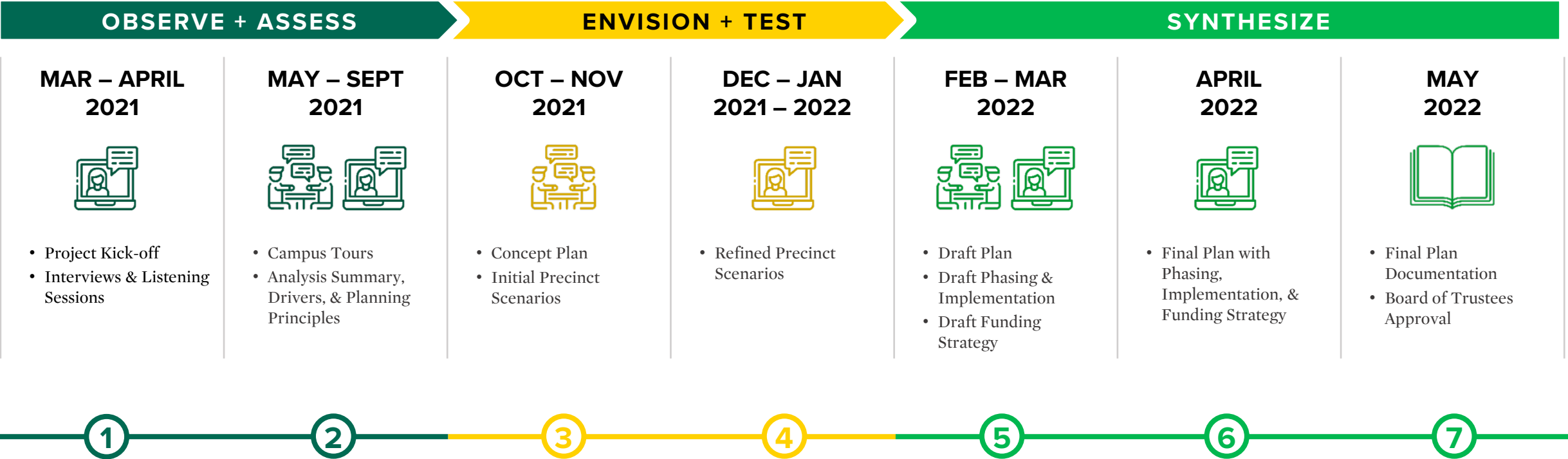
Project Kick-off

COLLABORATIVE STRUCTURE



Planning Process and Schedule

The 2022 Campus Master Plan is the culmination of many ideas gathered and amplified through a rigorous and collaborative planning and engagement process.



Interviews and Listening Sessions

FOCUS GROUPS

Program Drivers

- Academics
 - 1. Classrooms and Teaching
 - 2. Teaching Labs and Research Spaces
 - 3. Performing and Visual Arts Spaces
 - 4. Collaboration, Library, and Study Spaces
- Student Services
 - Academic and student support
- Residential Life
 - Housing inventory, types of offerings, common spaces
- Athletics & Recreation
 - Promoting student well-being, impact on "school spirit"
- Administration & Workplace
 - Office space locations, amenities, collaboration
- Dining Services
 - Food, dining hall, food waste
- Student Organizations
 - Career counseling, networking and training events

Physical Drivers

- Campus Mobility
 - Pedestrian, bicycle, vehicular, service, bus, wayfinding, parking, safety
- Facilities & Infrastructure
 - Building conditions, infrastructure needs
- Real Estate
 - Relationship with City, off-campus and edge properties, future growth

Cross-Cutting Drivers

- Integrative Learning and Education
 - Interdisciplinary learning, faculty support, digital/IT resources
- Access
 - Admissions, educational opportunities, post college opportunities
- Well-Being
 - Inclusiveness, wellness, well-being, support, safety
- Diversity, Equity, & Inclusion
- Sustainability
 - Financial resources, human resources, physical and natural resources, campus/community practices and identity
 - 1. Sustainability Student Groups
 - 2. Sustainability Faculty

FOCUS GROUPS



Meetings and Listening Sessions

» 250+ Participants

Focus Groups



Classrooms and Teaching Spaces ▫ Teaching Labs and Research Spaces ▫ Performing and Visual Arts Spaces ▫ Collaboration, Library, and Study Spaces ▫ Student Services ▫ Academic Support ▫ Student Organizations ▫ Residential Life ▫ Athletics and Recreation ▫ Administration and Workplace ▫ Dining Services ▫ Campus Mobility ▫ Facilities and Infrastructure ▫ Real Estate ▫ Integrative Learning and Education ▫ Access ▫ Well-Being ▫ Diversity, Equity, and Inclusion ▫ Sustainability Student Groups ▫ Sustainability Faculty

Internal Stakeholders



Friends of Skidmore Athletics (FOSA) ▫ Alumni Association Board of Directors ▫ Tang National Advisory Council ▫ Retiree Initiative Planning Group (RIPG)

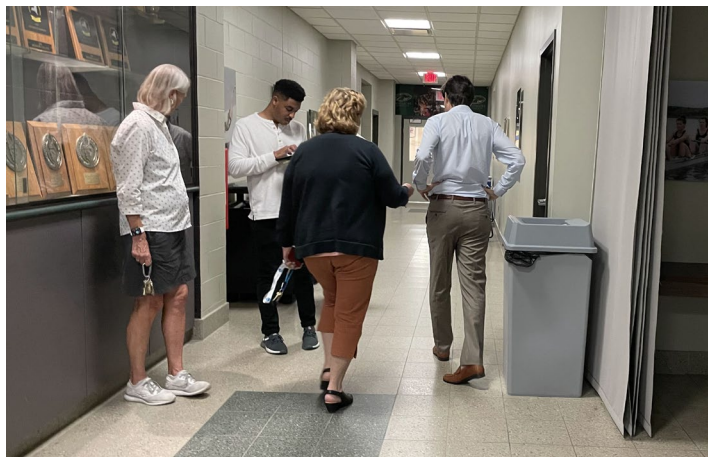
External Stakeholders



Sustainable Saratoga ▫ Pitney Meadows Community Farm ▫ Saratoga Springs Preservation Foundation ▫ Bikeatoga.org ▫ Climate Smart Task Force in Saratoga Springs ▫ Saratoga P.L.A.N. ▫ Skidmore Neighbors

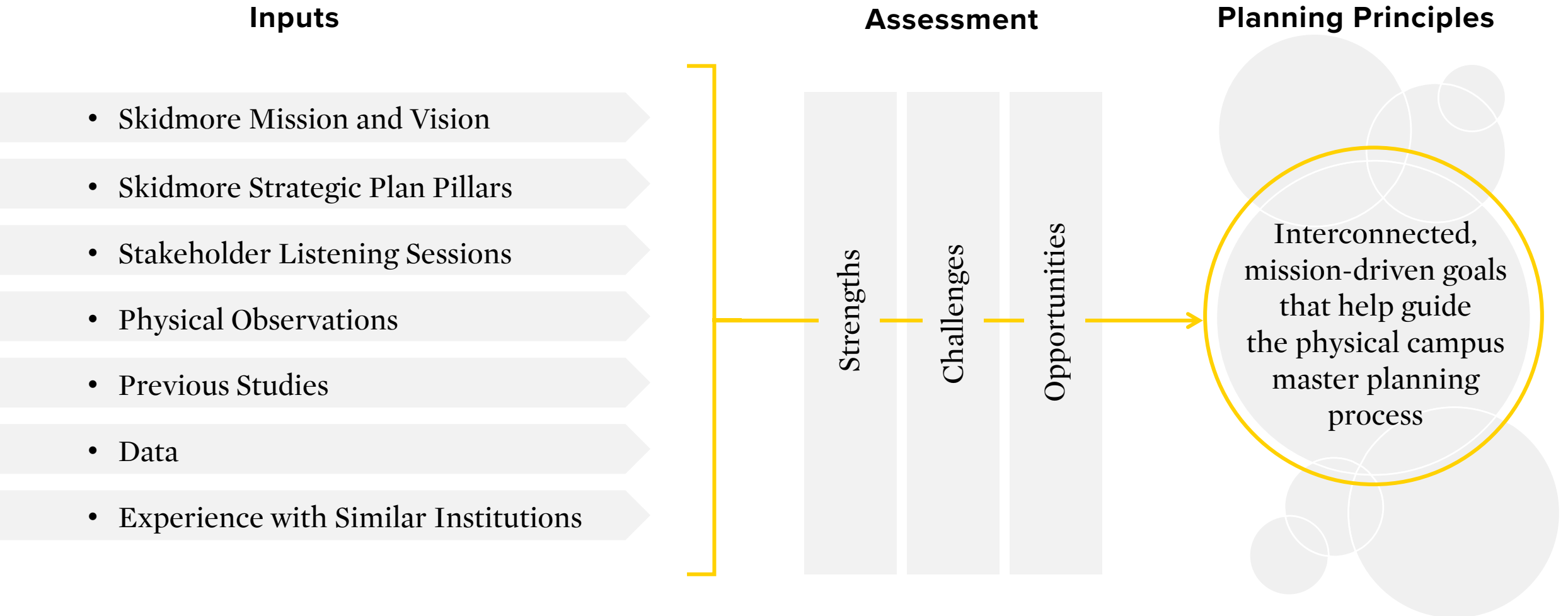
Campus Tours

JULY 13TH – 16TH, 2021



Campus Assessment

OVERVIEW



Campus Assessment

VIDEOS CREATED ON KEY ISSUES TO ADDRESS

Student Experience

- Residential Experience
- Student Social, Support, and Wellness Space

Building Age & Condition

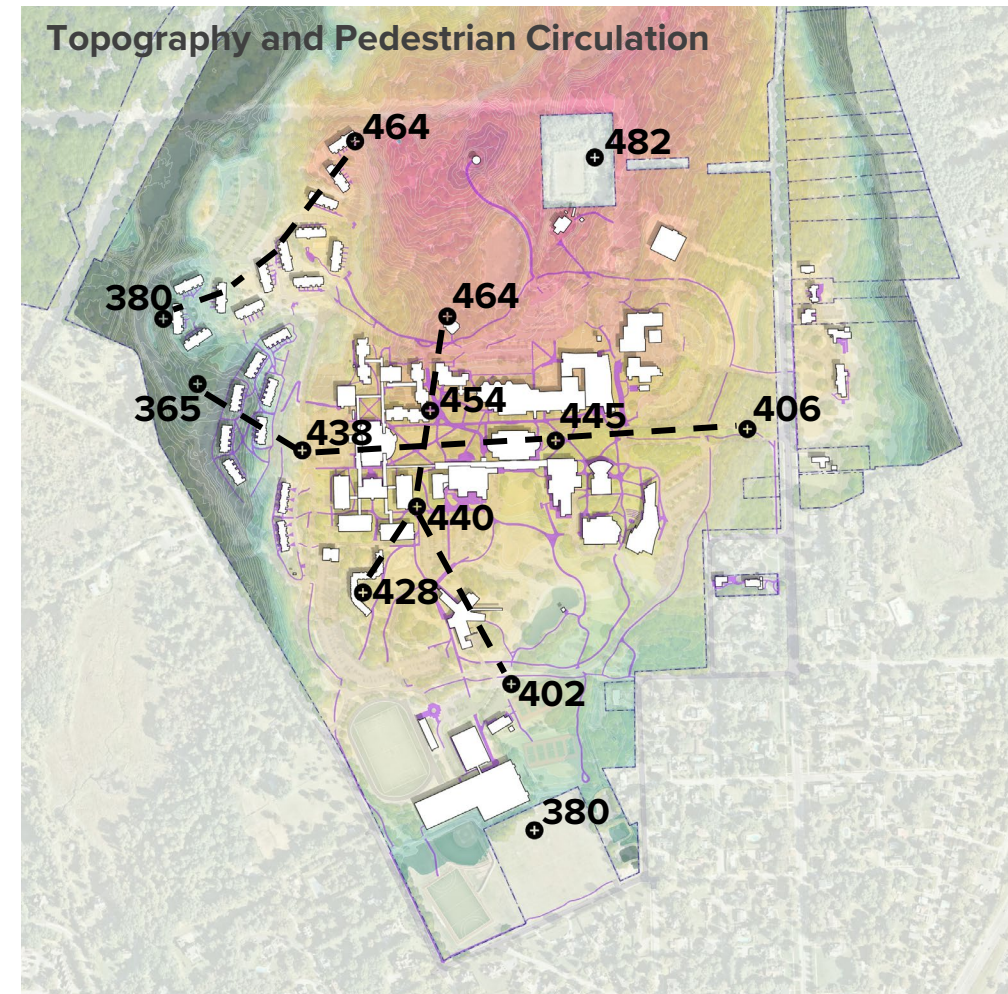
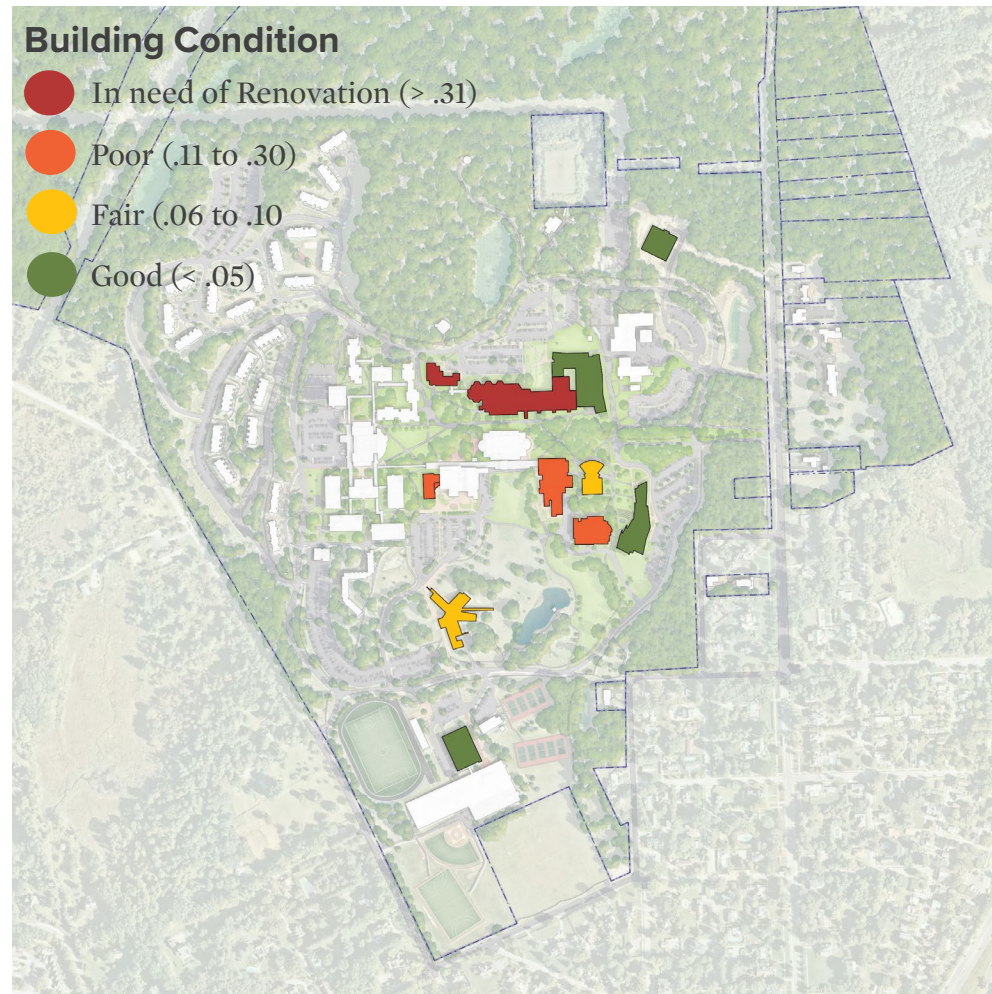
- Academic Space

Campus Experience & Accessibility

- Campus Entries
- Signage and Wayfinding
- Topography and Accessibility
- Impervious Surfaces
- Back Door versus Front Door

Campus Assessment

DIAGRAMS CREATED TO BETTER UNDERSTAND CAMPUS CHALLENGES AND OPPORTUNITIES



Planning Principles

Integration

Foster creative learning, discovery, and collaboration across disciplines and departments

Flexibility

Design adaptive, student-centered spaces that promote academic success and educational experiences

Belonging

Nurture inclusivity, a welcoming environment, and accessibility throughout campus and prioritize the campus core for learning and student engagement

Wellness

Support the holistic health and well-being of our students and entire campus community

Humility

Preserve the unique, understated beauty of campus while cultivating pride in its history, purpose, and mission

Stewardship

Maintain compactness and prioritize a sustainable campus environment

Concept Plan & Initial Precinct Scenarios

CAMPUS WORKSHOP

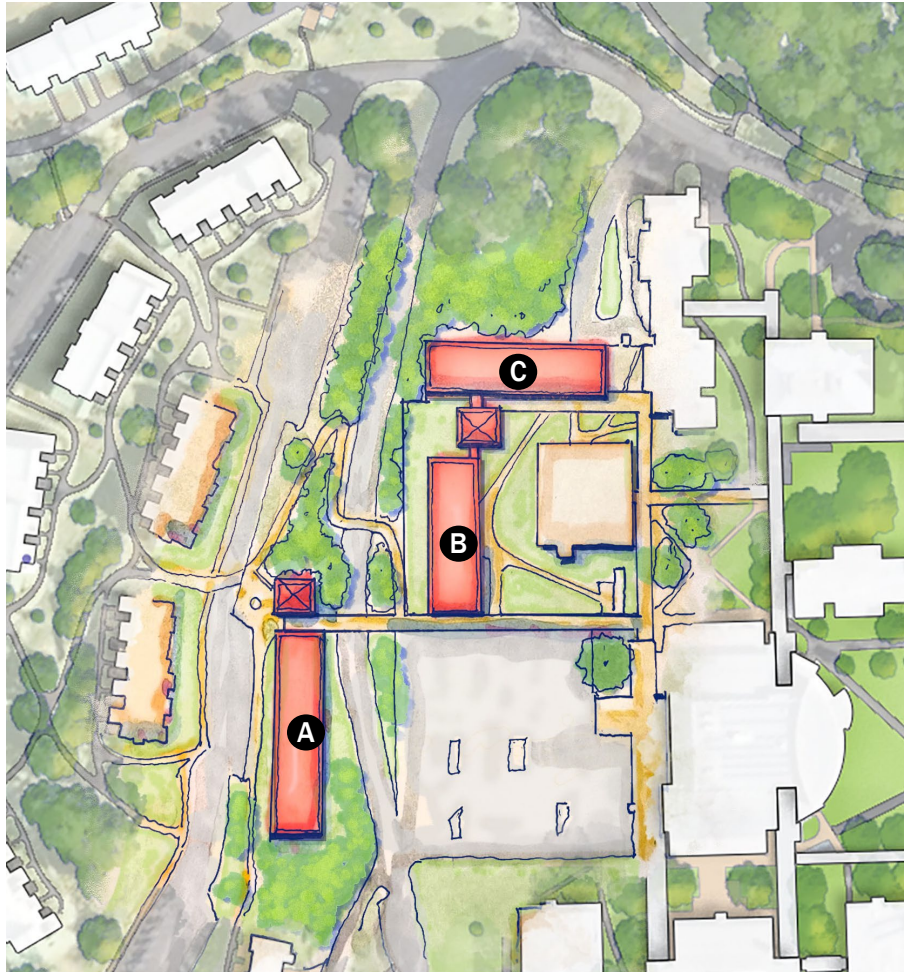
Work Sessions:

- Academic & Integrative Learning
- Student Wellness, Collaboration Space, Residential, and Athletics & Recreation
- Campus Systems: Sustainability, Open Space, and Mobility
- Campus Arrival, North Broadway, and Clinton Street
- Diversity, Equity, & Inclusion

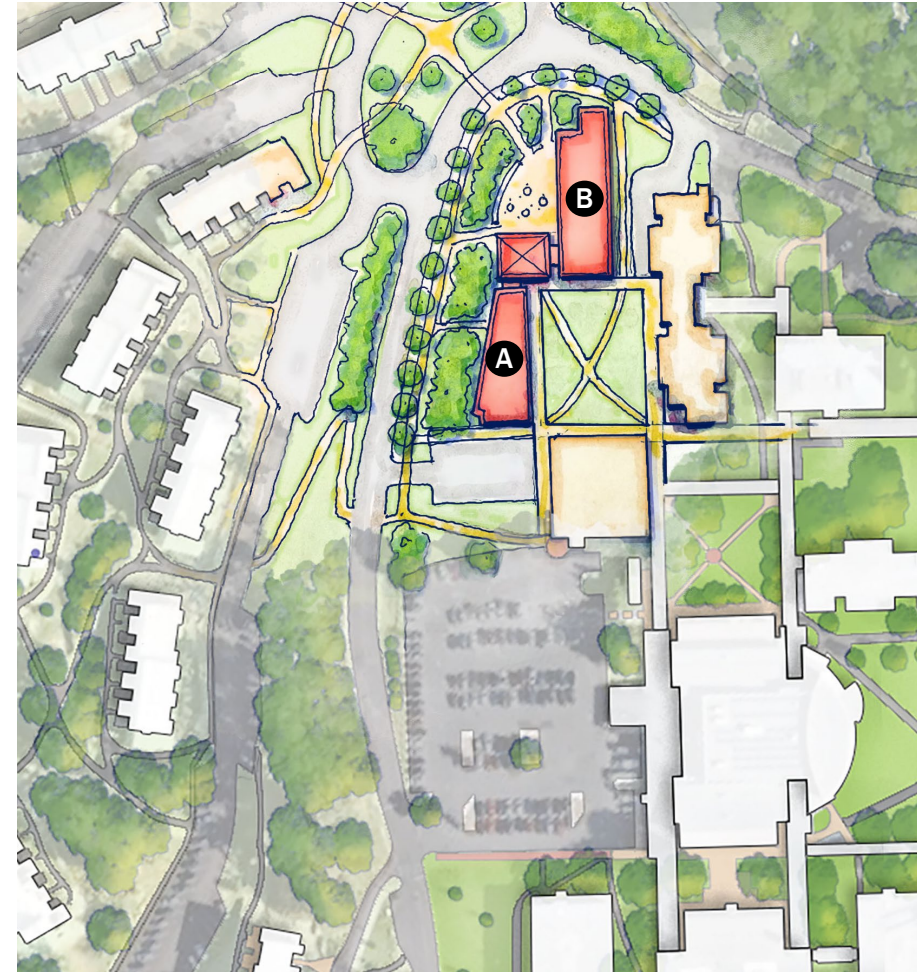


Concept Plan & Initial Precinct Scenarios

EXPLORING SCENARIOS



Option A



Option B

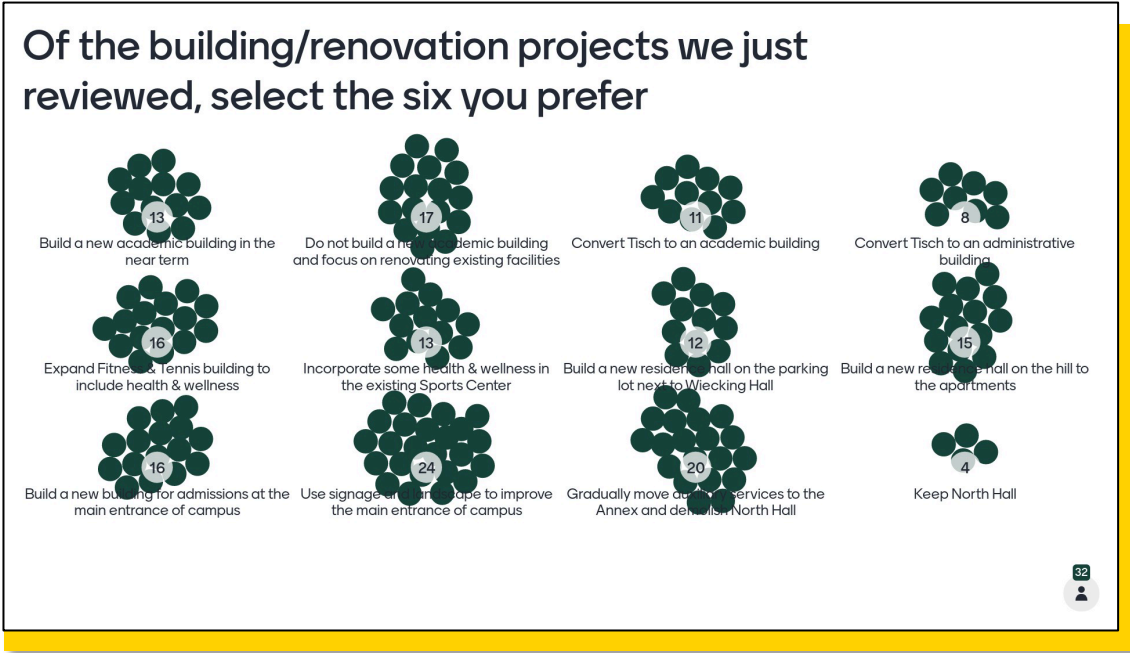
Refined Precinct Scenarios

OPEN FORUMS



1,300+ Votes

130+ Participants

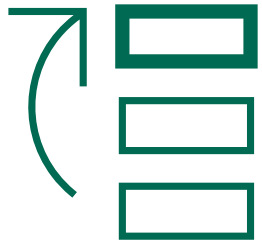


Draft Plan

DEFINING VALUE AT SKIDMORE

$$\frac{\text{VALUE}}{\text{COST}} = \text{BENEFIT ON INVESTMENT}$$

Priority
Need



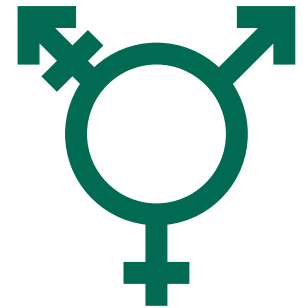
Planning
Principles



Sustainability



DEI



Draft Plan

PROJECT PRIORITIZATION SURVEY

Please select yes or no to indicate which projects you think address a priority need for the college AND which projects bolster student recruitment.

	Does this address a priority need for the college?	Does this bolster student recruitment?

Select the planning principles addressed by each project. You may select as many as you deem applicable.

Fit

He

Re

Da

Integration

Flexibility

Belonging

Wellness

Humility

Stewardship

On a scale of 1-3 (3 being the highest), rate how well each project promotes sustainability and the responsible use of existing resources

Fit

Fa

We

Re

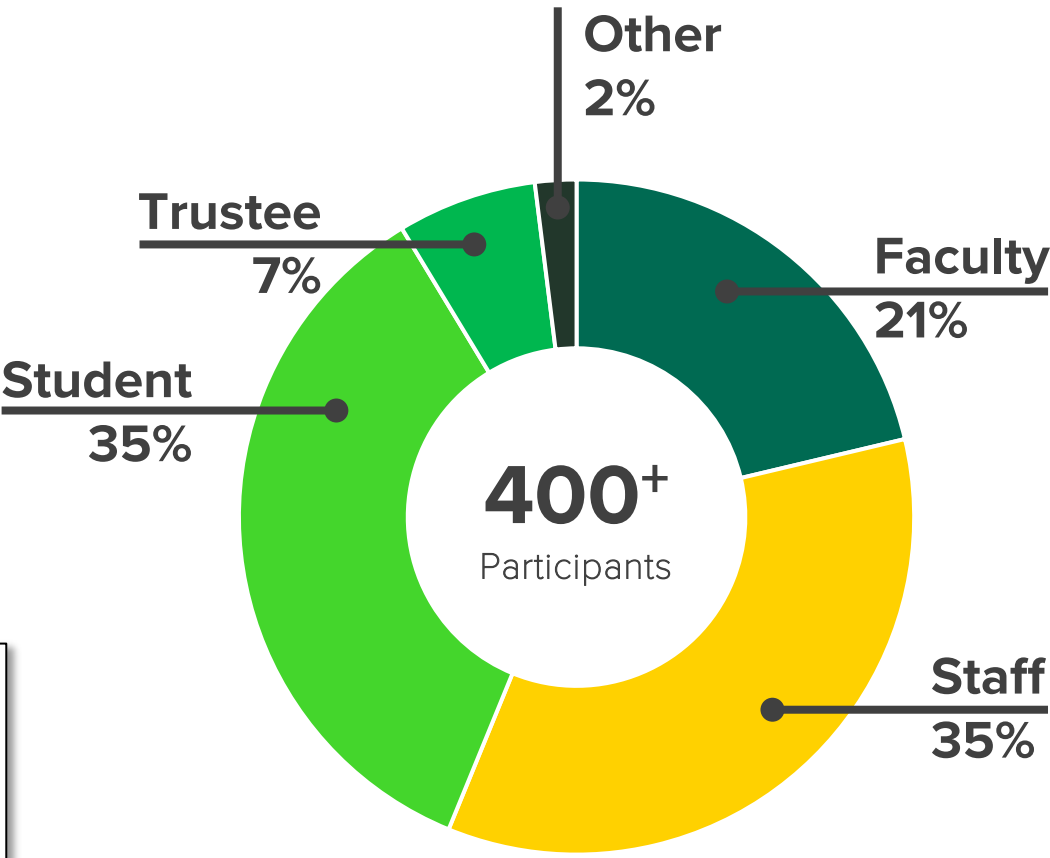
Ce

Ce

On a scale of 1-3 (3 being the highest), rate how well each project promotes diversity, equity, and inclusion (DEI)

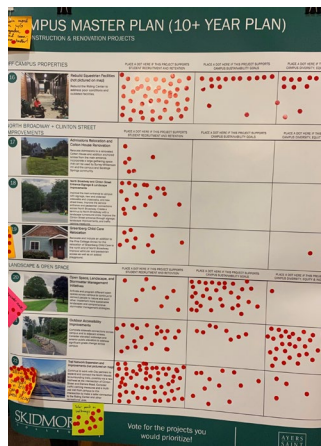
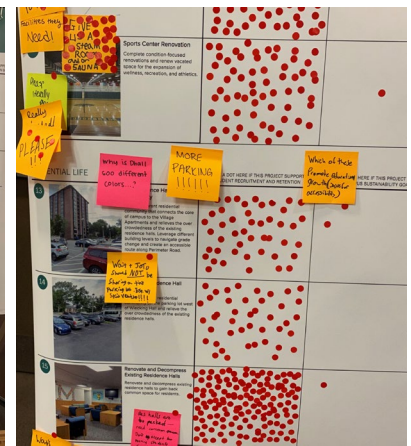
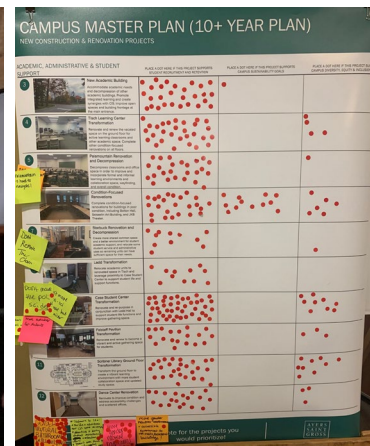
Fitness + Tennis Facility with Health + Wellness addition

Renovate Sports Center and Dance Center



Draft Plan

STUDENT OPEN HOUSE



Draft Plan

10+ YEAR PLAN*

Renovation

1. Sports Center Renovation
2. Tisch Learning Center Transformation
3. Ladd Transformation
4. Palamountain Hall Reno & Decompression
5. Bolton Hall Reno
6. Saisselin Art Building Reno
7. JKB Theater Reno
8. Scribner Library Ground Floor Renovation
9. Dance Center Renovation
10. Starbuck Reno & Decompression
11. Ladd & Case Student Center Transformation
12. Falstaff's Pavilion Reno
13. North Quad Res Halls Reno
14. South Quad Res Halls Reno
15. Wiecking Hall Reno

New Construction

16. Fitness, Tennis, & Health and Wellness Facility
17. New Academic Building (A)
18. Greenberg Child Care Center Relocation
19. Admissions Center Relocation and Colton House Reno
20. Hill Res Hall Community*
21. West Lot Res Hall Community*

Landscape

22. Clinton Street Entrance Signage and Landscape Improvements
23. North Broadway Entrance, Sidewalk and Landscape Improvements
24. Open space, landscape, and stormwater management
25. Enhance Central Gathering Spaces
26. Accessibility improvements
27. Trail Network Expansion and Improvements (not pictured)

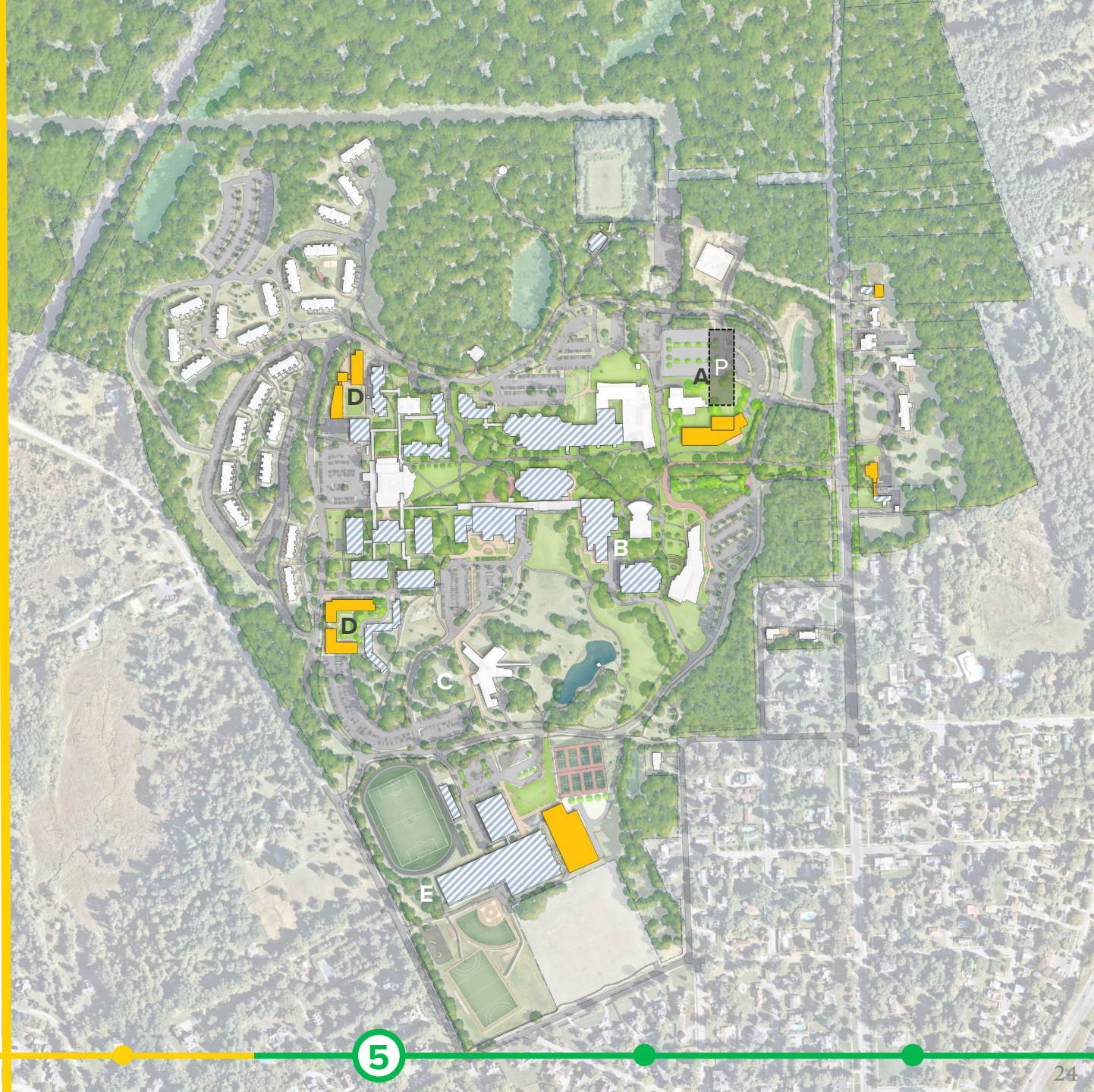


* Only one (120-240 beds) residential building is anticipated in the 10+-year planning horizon. The Draft Plan illustrates multiple potential sites

Draft Plan

LONG-TERM DEVELOPMENT

- A. Academic Quad
 - Building 2
 - Building 3
 - Parking Garage
- B. Arts Quad Infill Site (possible Dance relocation)
- C. Tang Expansion
- D. Residential
 - Hill Residence Hall Community
 - West Lot Residence Hall Community
- E. Athletics, Recreation, and Health & Wellness expansion



Final Plan

VISION FOR THE FUTURE

- Foster Creative Learning & Academic Success
- Enhance the Student Experience
- Support a Vibrant Residential Experience
- Create a Better Campus Landscape and Improve Campus Edges
- Diversity, Equity, & Inclusion
- Sustainability

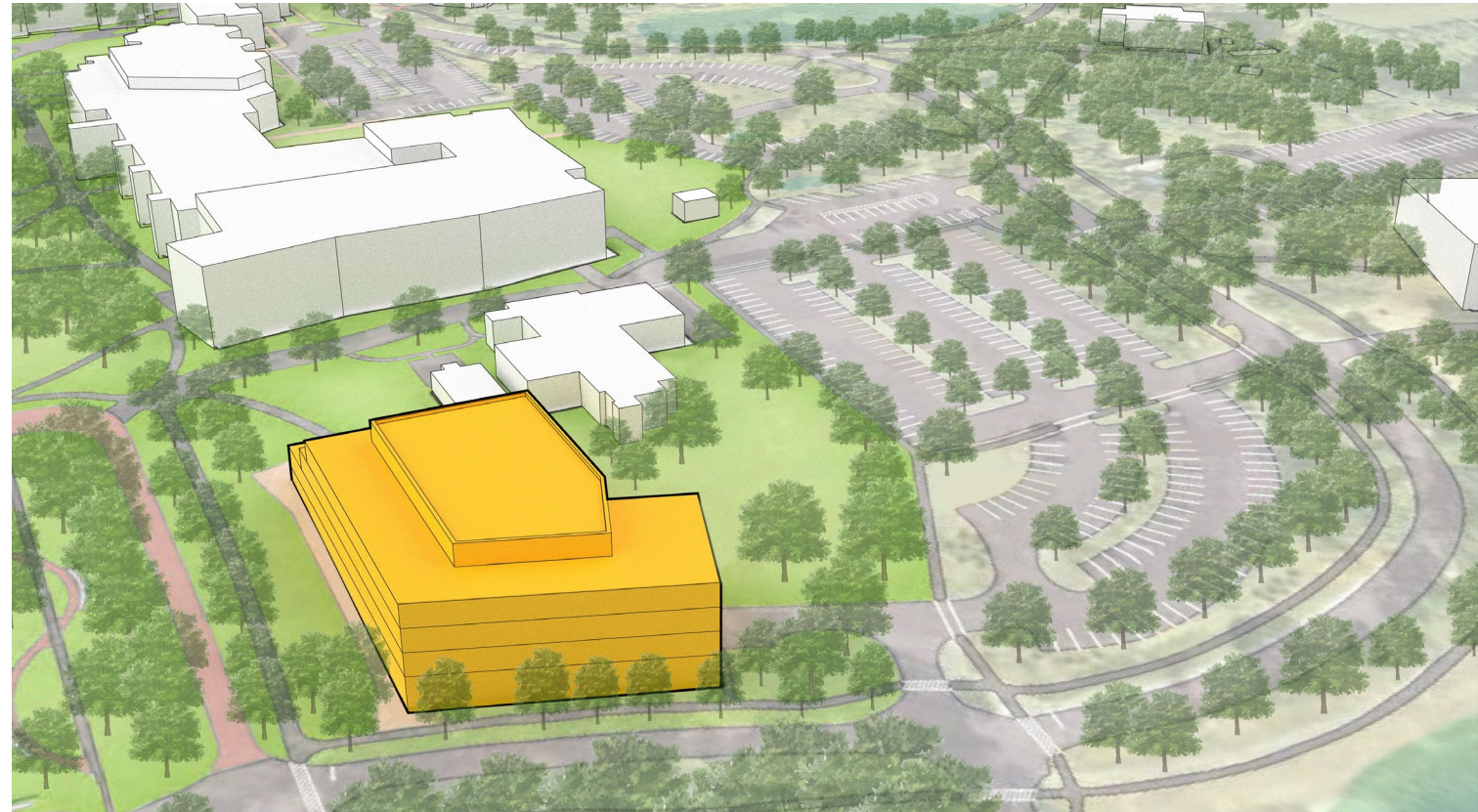


Overall Proposed Campus Plan

Final Plan

VISION FOR THE FUTURE

- Foster Creative Learning & Academic Success
- Enhance the Student Experience
- Support a Vibrant Residential Experience
- Create a Better Campus Landscape and Improve Campus Edges
- Diversity, Equity, & Inclusion
- Sustainability



Proposed Short-term New Academic Quad

Final Plan

VISION FOR THE FUTURE

- Foster Creative Learning & Academic Success
- Enhance the Student Experience
- Support a Vibrant Residential Experience
- Create a Better Campus Landscape and Improve Campus Edges
- Diversity, Equity, & Inclusion
- Sustainability

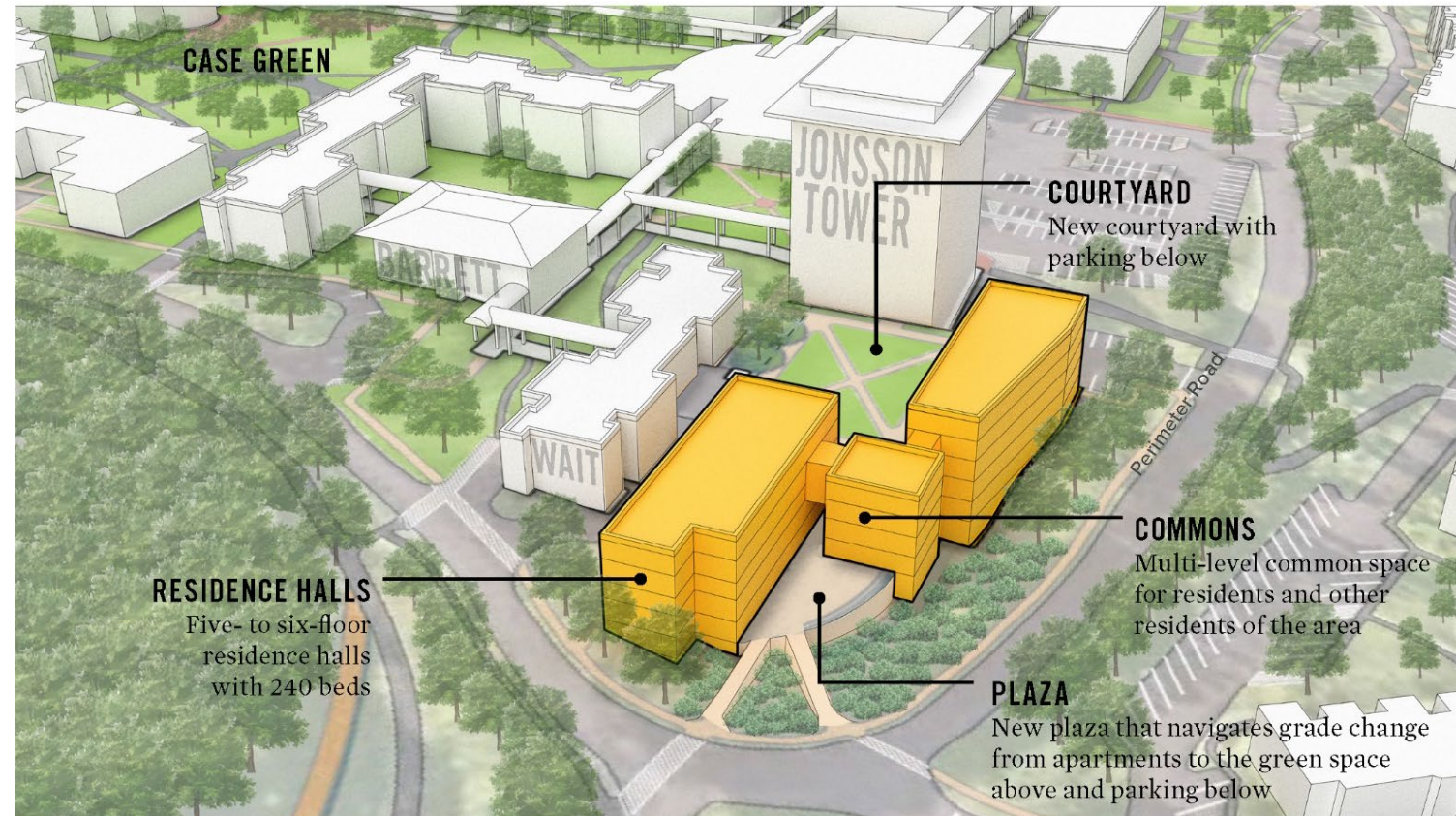


Scribner Library Ground Floor Renovation

Final Plan

VISION FOR THE FUTURE

- Foster Creative Learning & Academic Success
- Enhance the Student Experience
- Support a Vibrant Residential Experience
- Create a Better Campus Landscape and Improve Campus Edges
- Diversity, Equity, & Inclusion
- Sustainability

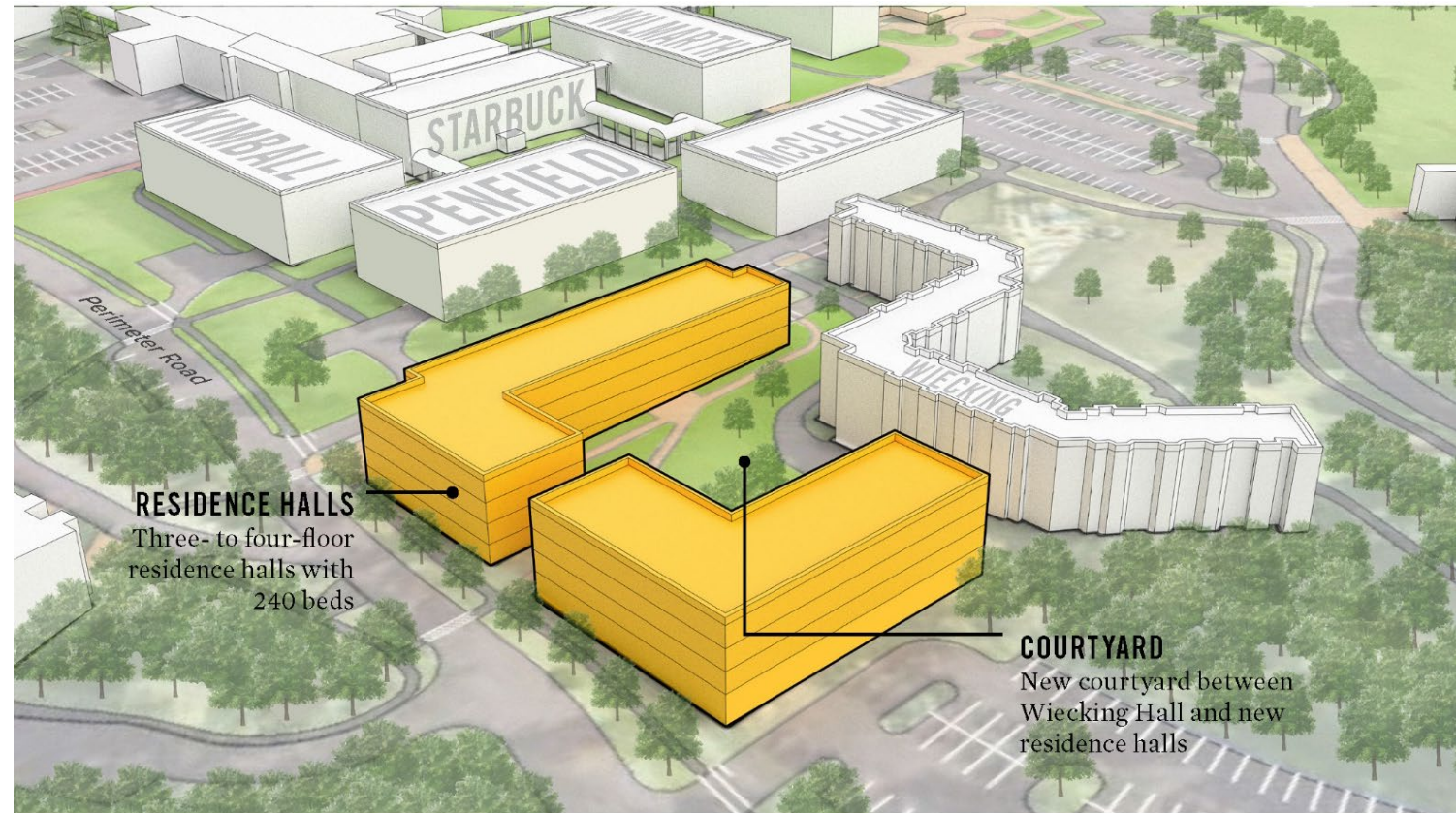


Proposed Residence Hall Community

Final Plan

VISION FOR THE FUTURE

- Foster Creative Learning & Academic Success
- Enhance the Student Experience
- Support a Vibrant Residential Experience
- Create a Better Campus Landscape and Improve Campus Edges
- Diversity, Equity, & Inclusion
- Sustainability



Proposed Residence Hall Community

Final Plan

VISION FOR THE FUTURE

- Foster Creative Learning & Academic Success
- Enhance the Student Experience
- Support a Vibrant Residential Experience
- Create a Better Campus Landscape and Improve Campus Edges
- Diversity, Equity, & Inclusion
- Sustainability



Proposed Landscape and Open Space Improvements

Final Plan

VISION FOR THE FUTURE

- Foster Creative Learning & Academic Success
- Enhance the Student Experience
- Support a Vibrant Residential Experience
- Create a Better Campus Landscape and Improve Campus Edges
- Diversity, Equity, & Inclusion
- Sustainability



Proposed Stormwater Management Improvements

Final Plan

VISION FOR THE FUTURE

- Foster Creative Learning & Academic Success
- Enhance the Student Experience
- Support a Vibrant Residential Experience
- Create a Better Campus Landscape and Improve Campus Edges
- Diversity, Equity, & Inclusion
- Sustainability



DEI Session Ideas

Final Plan

VISION FOR THE FUTURE

- Foster Creative Learning & Academic Success
- Enhance the Student Experience
- Support a Vibrant Residential Experience
- Create a Better Campus Landscape and Improve Campus Edges
- Diversity, Equity, & Inclusion
- Sustainability

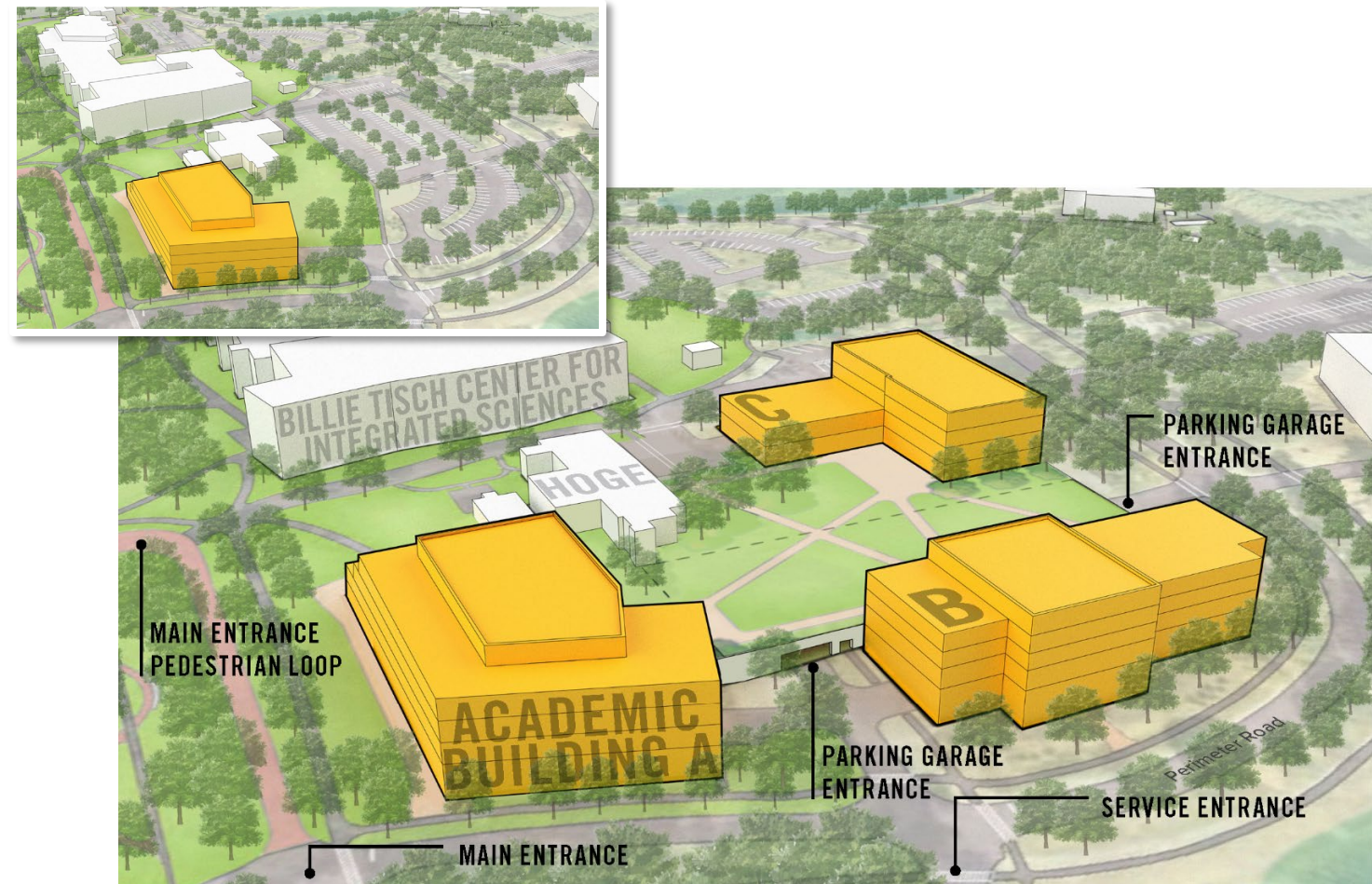


Proposed Sustainability Initiatives

Final Plan

LONG-TERM OPPORTUNITIES

- Academic Quad Expansion
- Tang Expansion
- Arts Quad Infill
- Athletics, Recreation, & Health and Wellness Expansion
- Residence Hall Community
- Ice Rink Facility



Proposed Long-term Academic Quad

Final Plan

FOSTER CREATIVE LEARNING & ACADEMIC SUCCESS

- 1 Tisch Learning Center Transformation
- 2 Palamountain Hall Renovation and Decompression
- 3 Condition-focused Renovations: Tisch Learning Center (included in #1), Palamountain Hall (included in #2), Bolton Hall, Ladd Hall (included in #8), Saisselin Art Building, JKB Theater
- 4 Dance Center Renovation
- 5 New Academic Building (A)

ENHANCE THE STUDENT EXPERIENCE

Student Support

- 6 Starbuck Center Renovation and Decompression
- 7 Case Center Transformation
- 8 Ladd Hall Transformation
- 9 Falstaff's Pavilion Renovation
- 10 Scribner Library Ground Floor Renovation
- 11 Admissions Center Relocation and Colton House Renovation

Athletics, Recreation, & Health and Wellness

- 12 Williamson Sports Center Renovation
- 13 Fitness, Tennis, & Health and Wellness Facility
- 14 Equestrian Facilities Renovation

SUPPORT A VIBRANT RESIDENTIAL EXPERIENCE

- 15 Residence Hall Renovations and Decompression: Jonsson Tower, Wiecking Hall, Howe-Rounds Hall, Wilmarth Hall, McClellan Hall, Wait Hall, Penfield Hall, Kimball Hall
- 16 Residence Hall Community (240 beds)




CREATE A BETTER CAMPUS LANDSCAPE AND IMPROVE CAMPUS EDGES

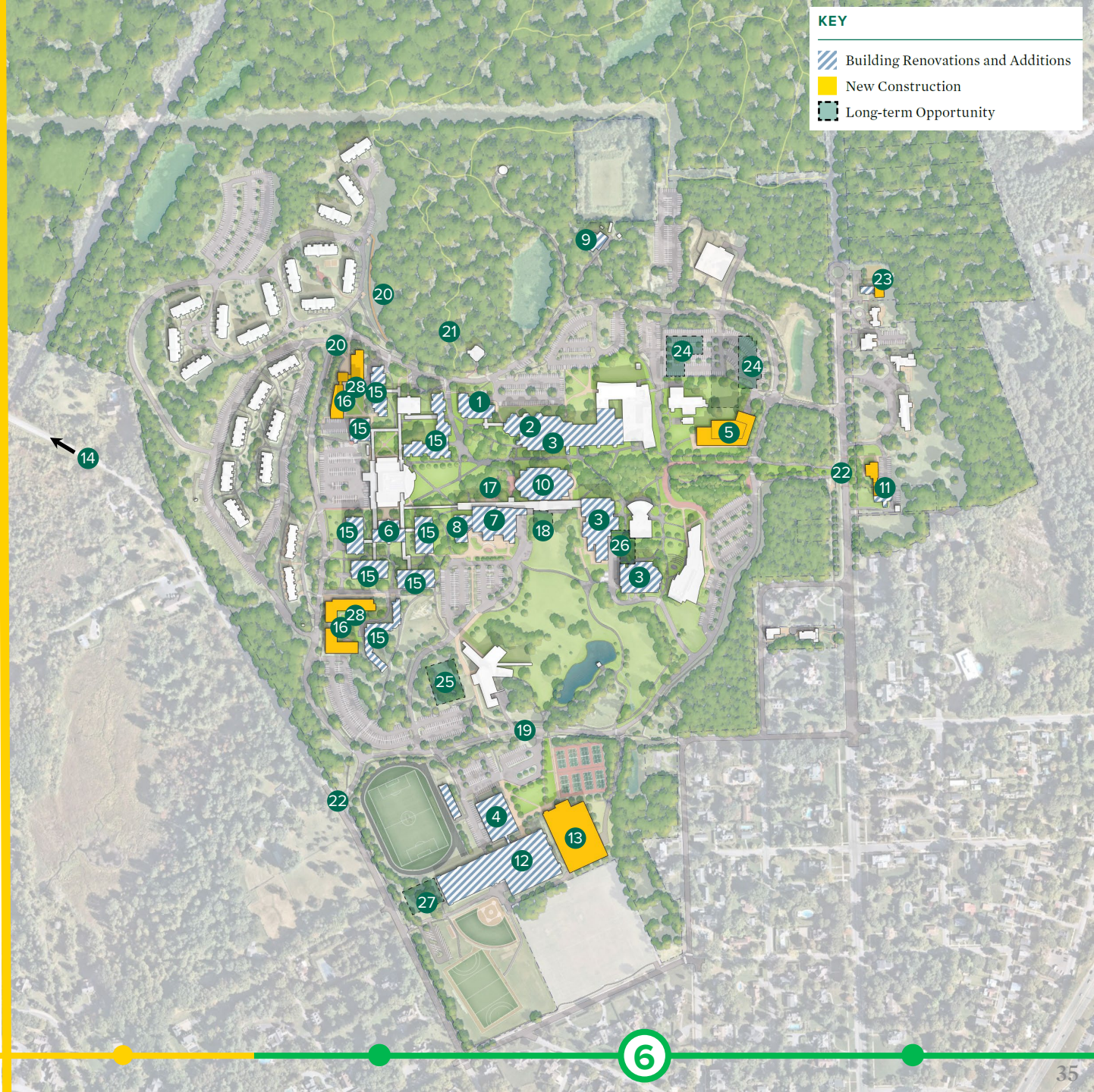
- 17 Case Center and Case Green Plaza Improvements
- 18 Scribner Library Exterior Stair
- 19 Sustainable Landscapes and Stormwater Management Initiatives
- 20 Outdoor Accessibility Improvements
- 21 Trail Network Expansion and Improvements
- 22 North Broadway and Clinton Street Entrances & Landscape Improvements
- 23 Greenberg Child Care Center Relocation

LONG-TERM OPPORTUNITIES

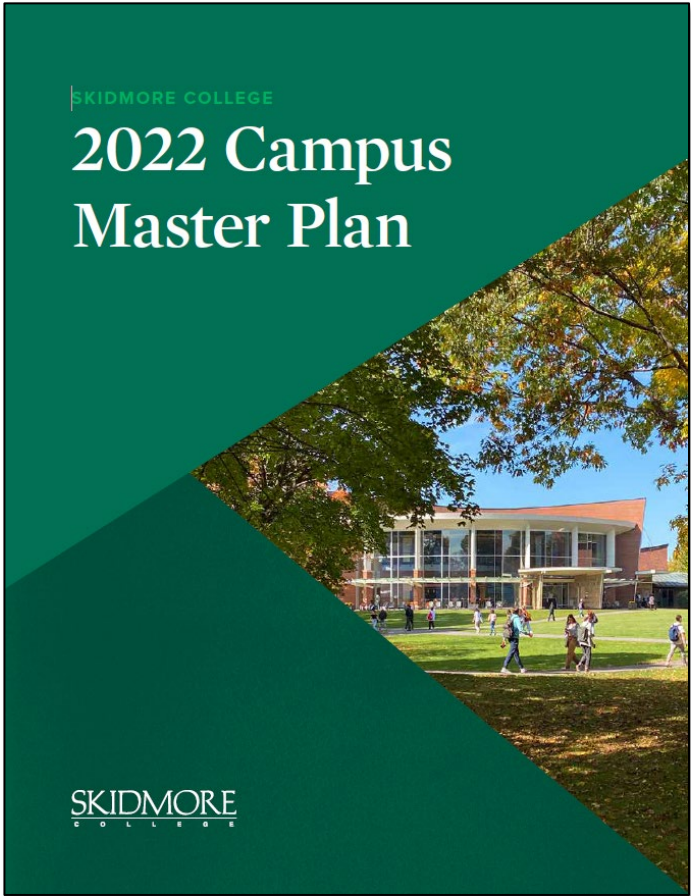
- 24 Academic Quad Expansion (Building B, Building C, and Parking Garage)
- 25 Tang Expansion
- 26 Arts Quad Infill
- 27 Athletics, Recreation, & Health and Wellness Expansion
- 28 Residence Hall Community (240 beds)
- 29 Ice Rink Facility (not labeled)

KEY

-  Building Renovations and Additions
-  New Construction
-  Long-term Opportunity



Final Documentation



Recent Work on Campus

- **Greenberg Child Care Center Relocation:** Near completion, schedule to be occupied this year
- **Athletics and Health & Wellness Design/Planning:** Underway
- **Stormwater Improvements:** Completed major stormwater improvements on North Broadway
- **Front Entrance Signage/Enhancement Project:** Underway with plans to complete this year; final trees and landscaping to be completed in the spring/fall
- **North Broadway Cul-De-Sac:** Received approval and started work in September; plans to complete by mid-October



Greenberg Child Care Center Construction



Thank you!