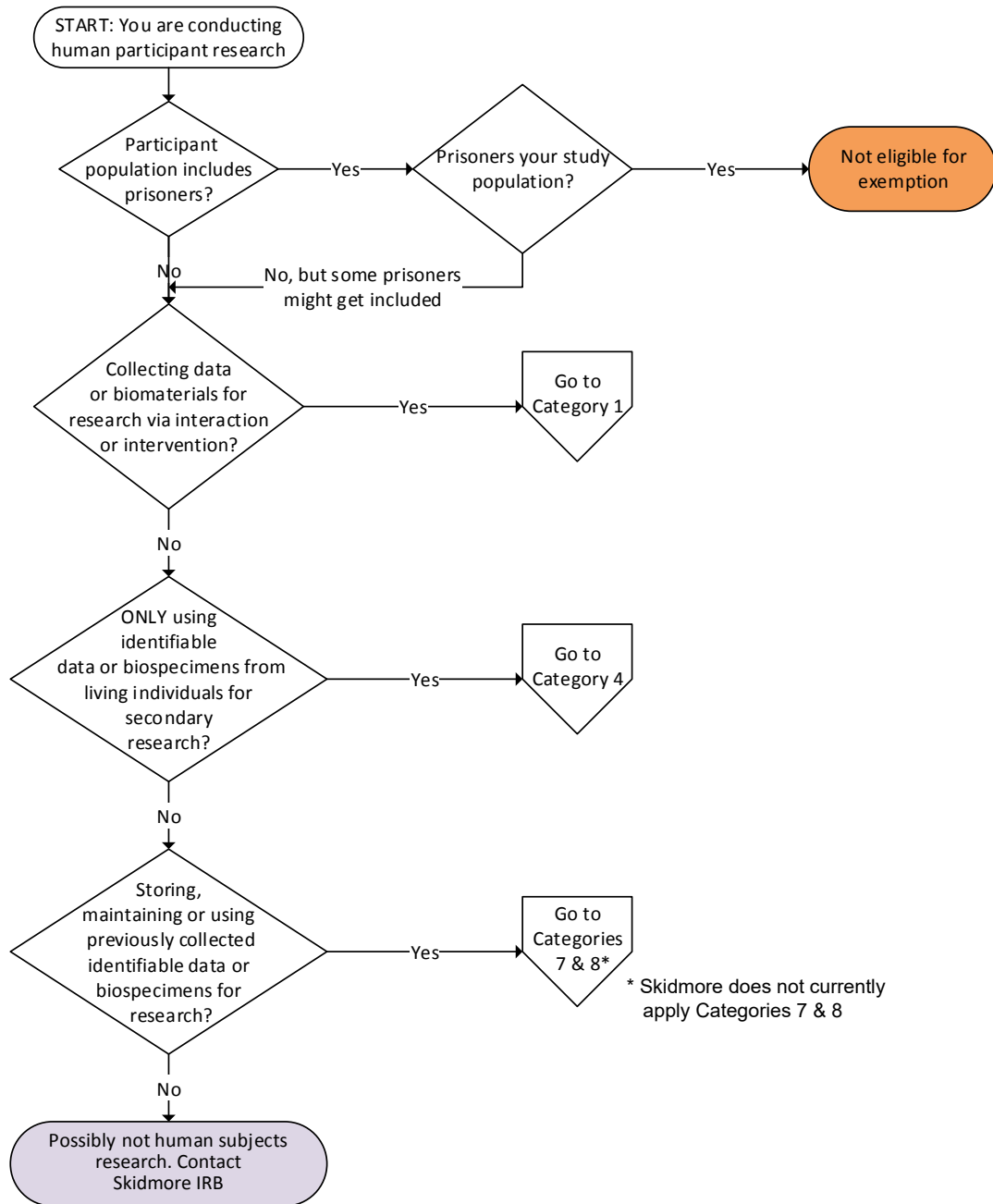


Exemption Decision Charts For General Guidance

Is Your Human Participant Research Eligible for Exemption?

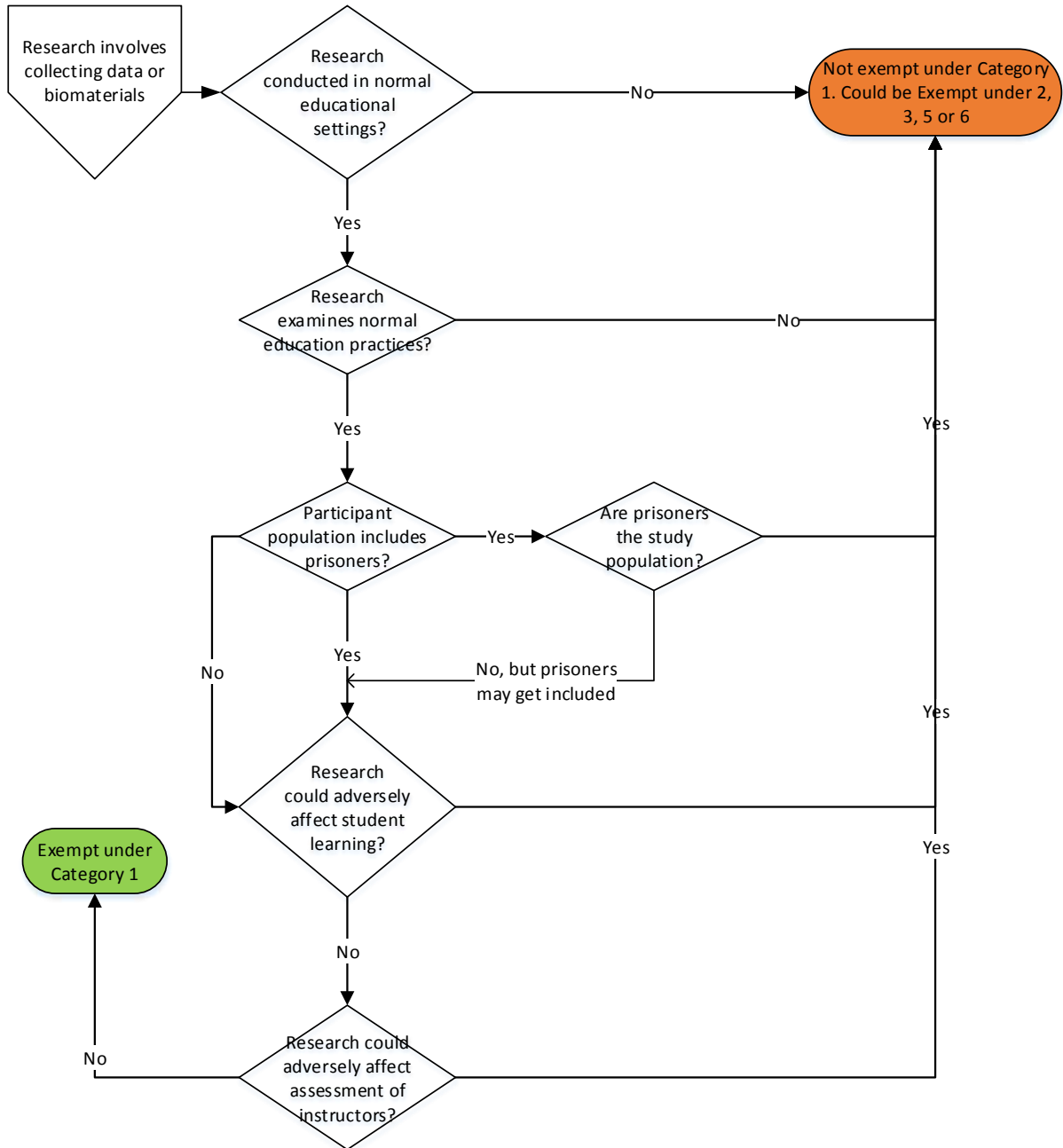


NOTE:

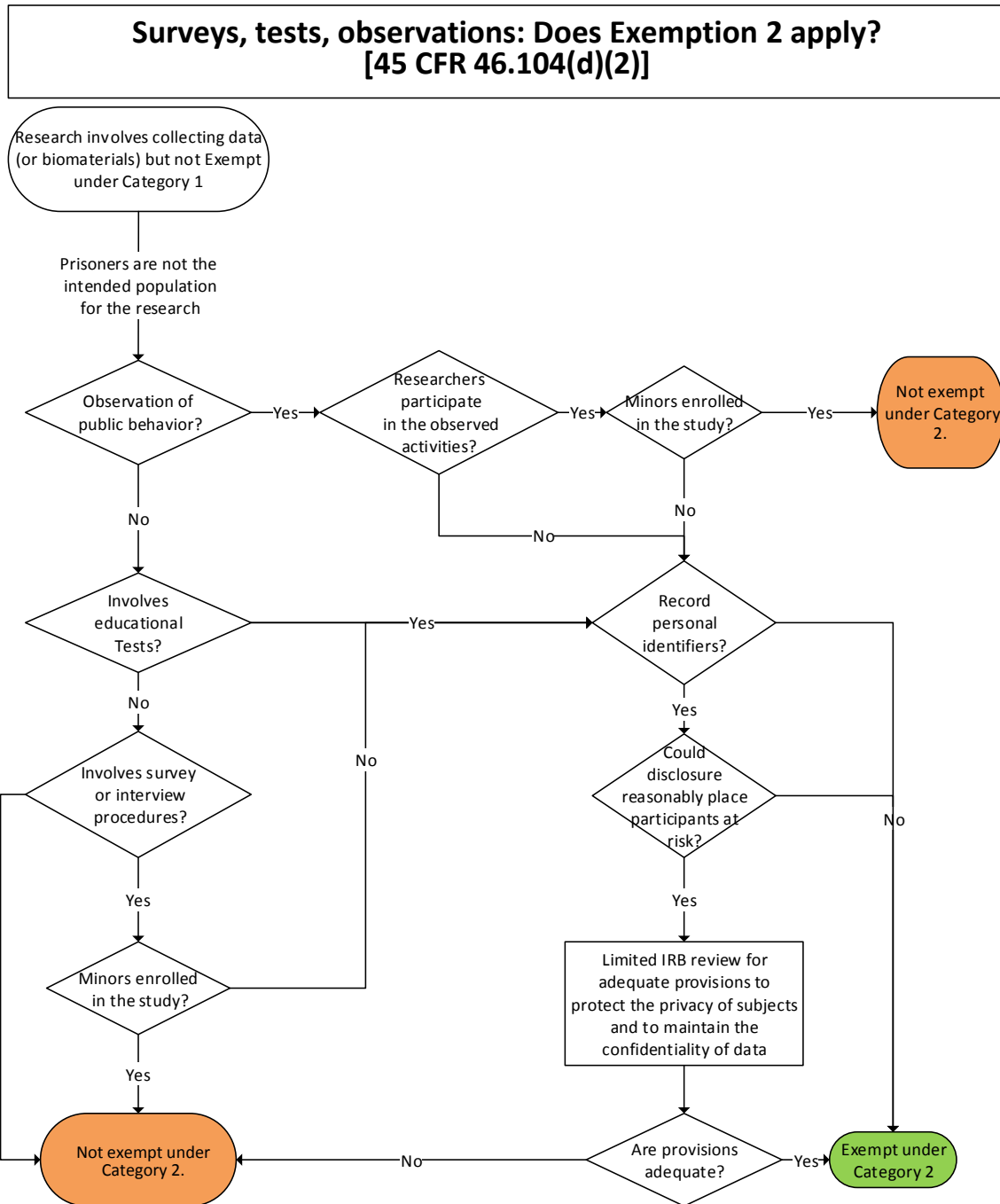
1. Researchers may not make a self-determination of exemption from IRB review. All research with human subjects must be reviewed by the Skidmore IRB and either granted an Exemption or Approval before study procedures may begin.
2. In order for the research to be eligible for exemption, the only involvement of human participants in the research must fall into one or more of the exemption categories.
3. Definitions and other resources are on the IRB website www.skidmore.edu/irb

Exemption Decision Charts For General Guidance

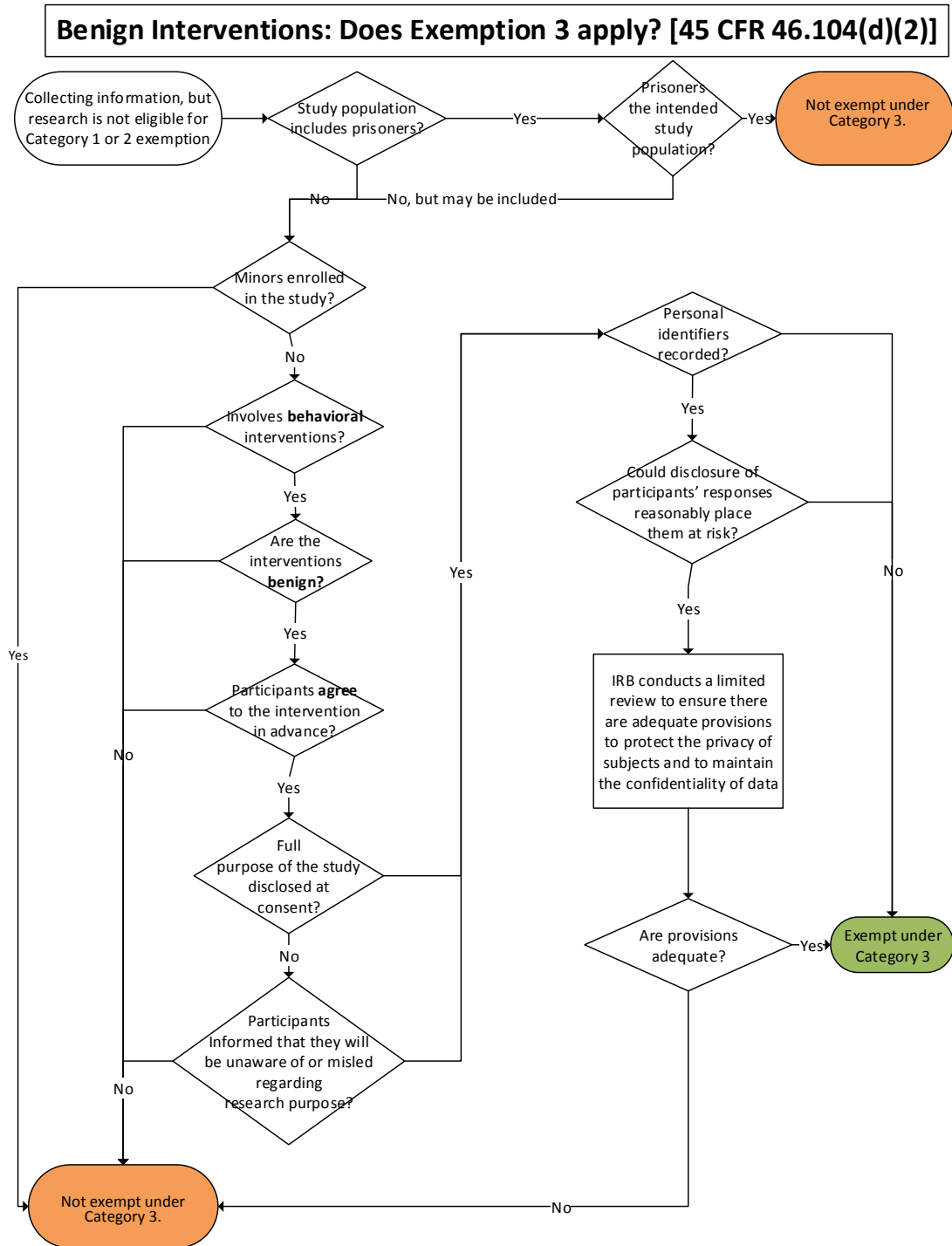
Educational practices: Does Exemption 1 apply? [45 CFR 46.104(d)(1)]



Exemption Decision Charts For General Guidance

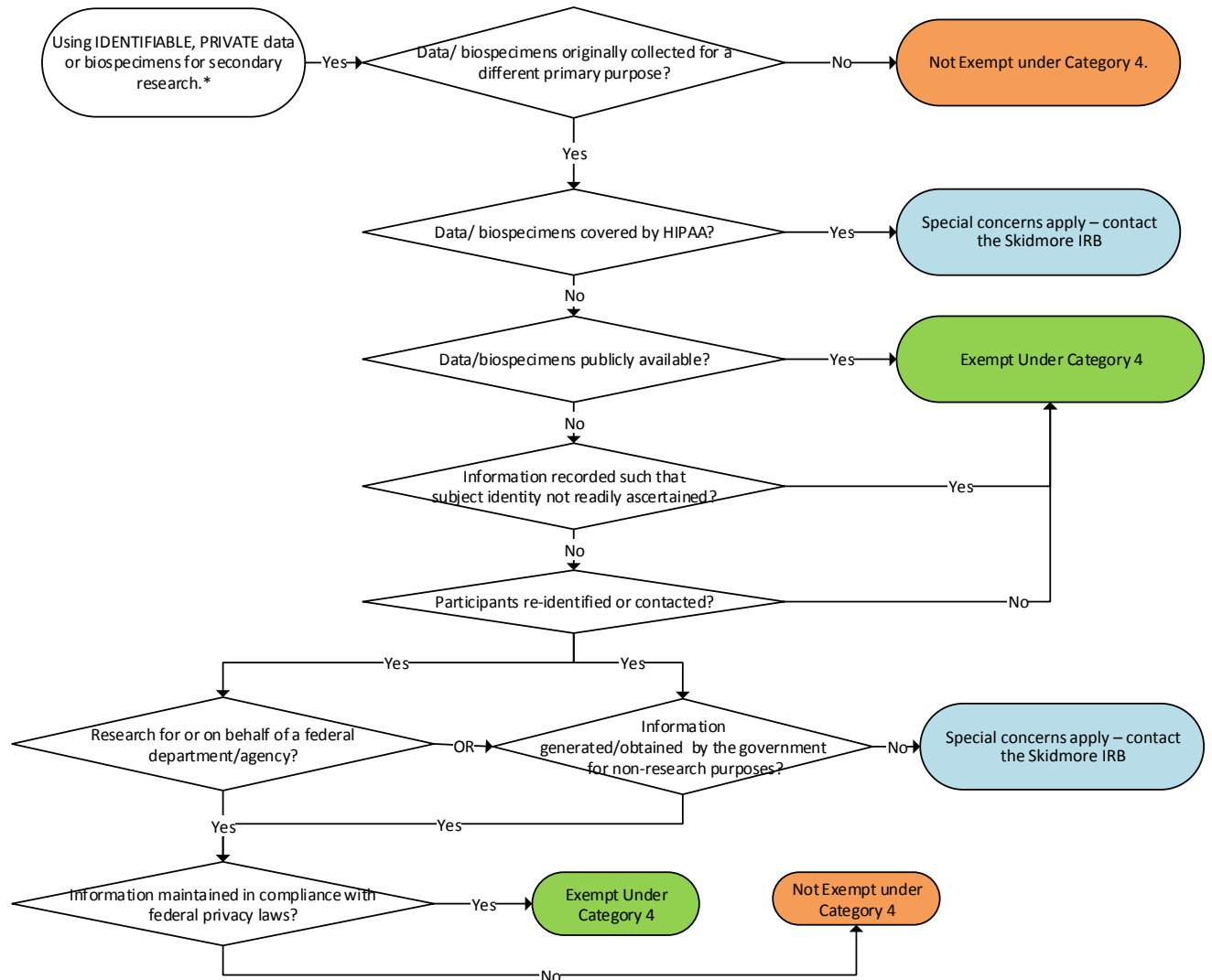


Exemption Decision Charts For General Guidance

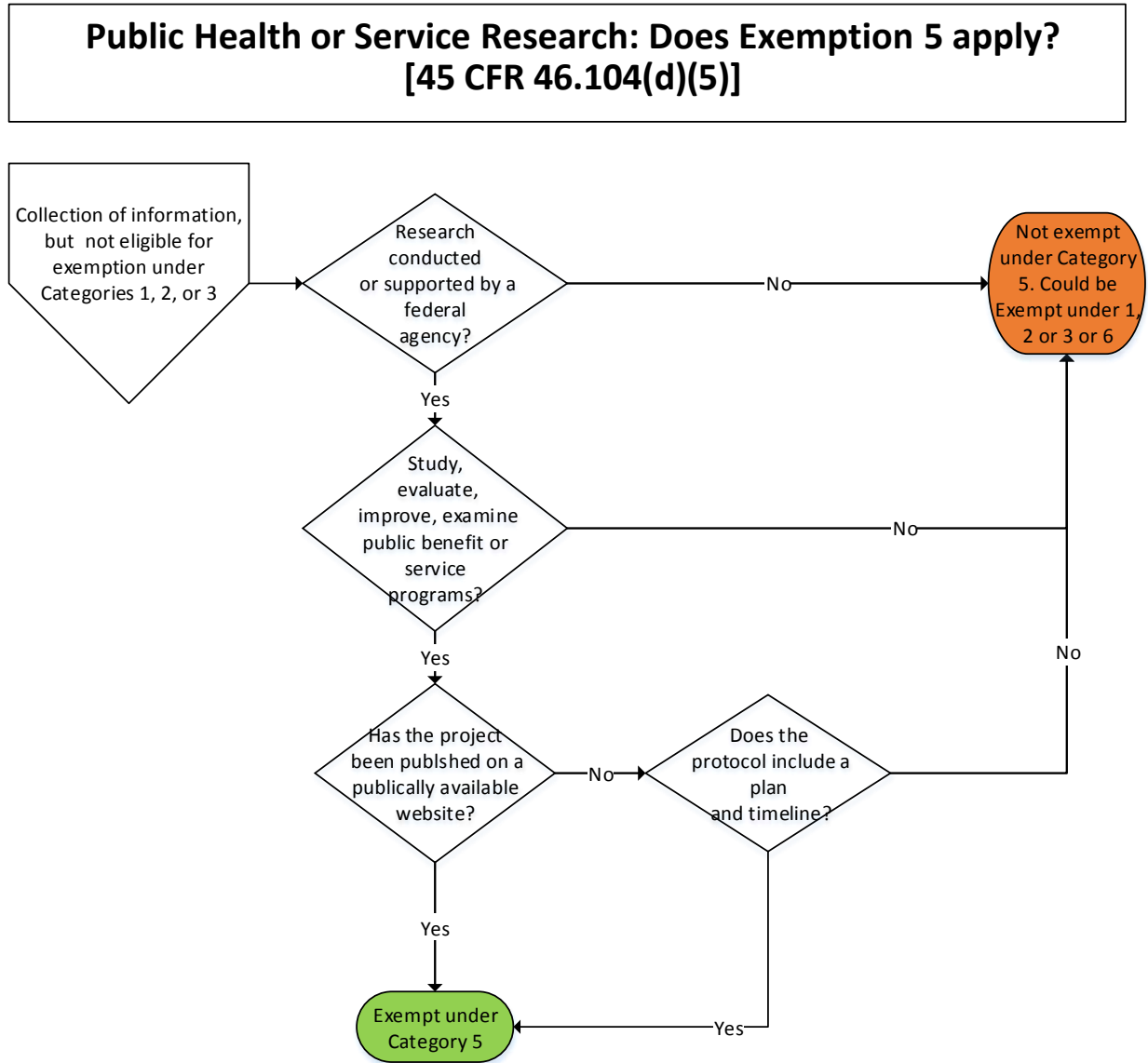


Exemption Decision Charts For General Guidance

Secondary Research: Does Exemption 4 apply? [45 CFR 46.104(d)(4)]



Exemption Decision Charts For General Guidance



Exemption Decision Charts For General Guidance

